



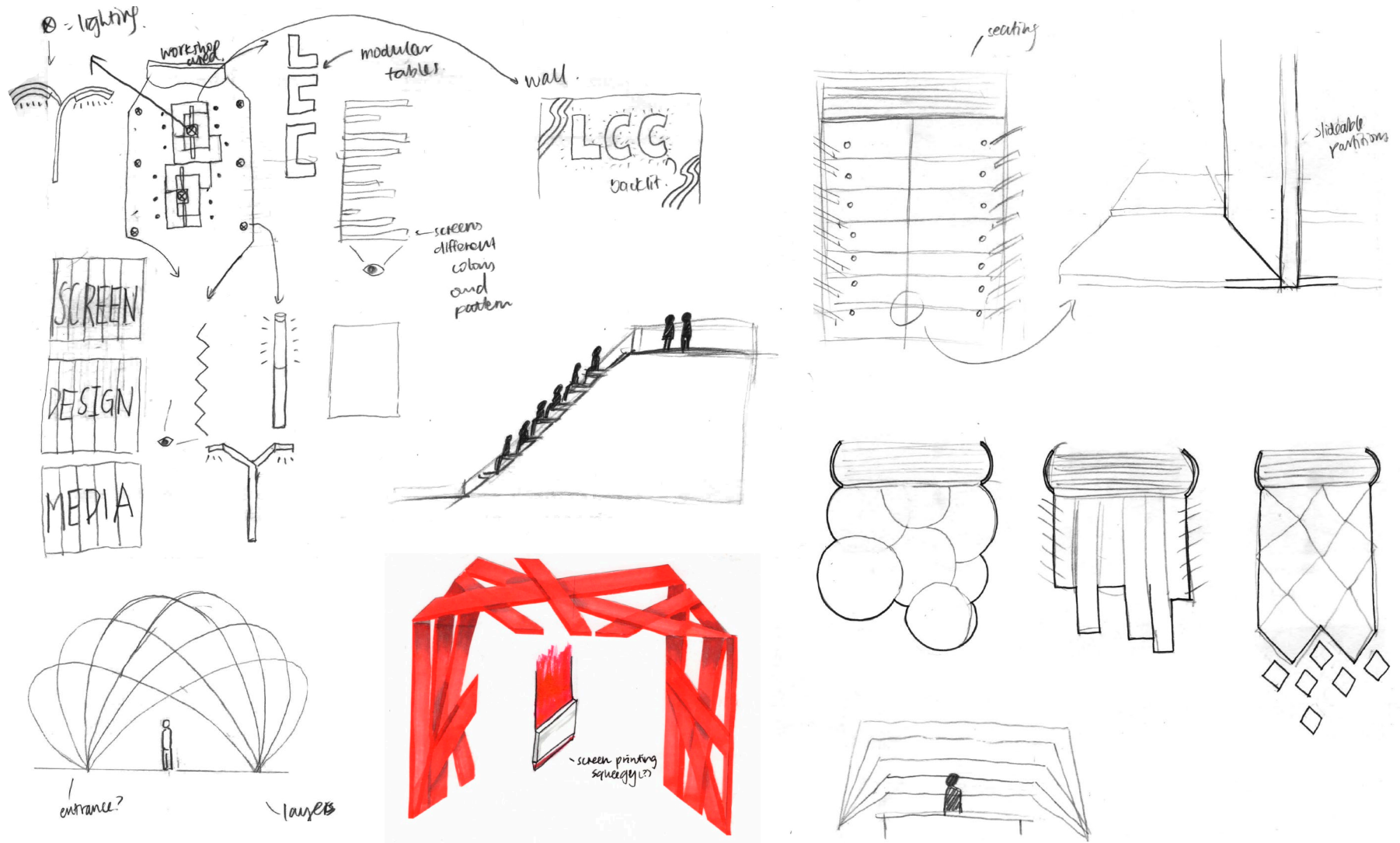
INTERIOR
DESIGN

TRIXY
LEUNG

Spatial Design
DESIGN PORTFOLIO

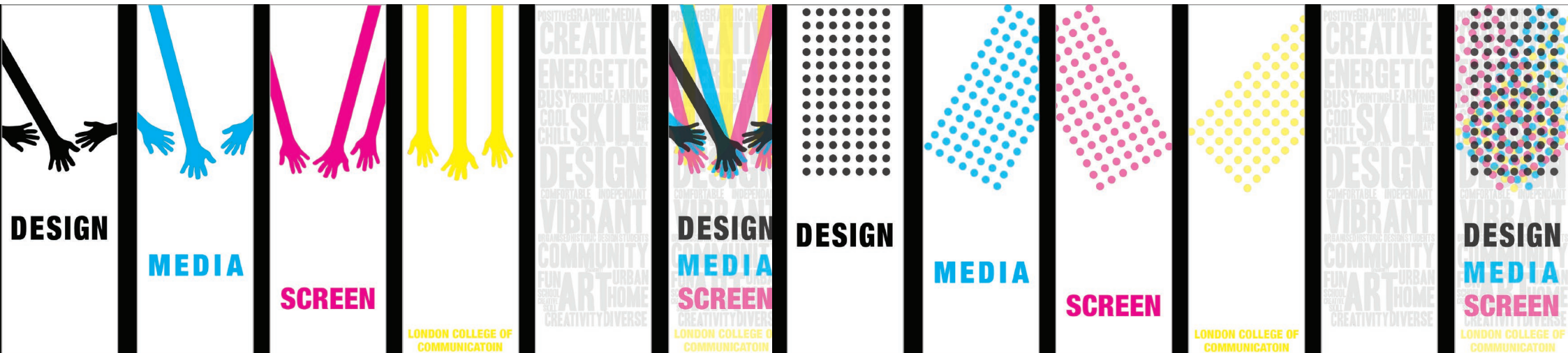
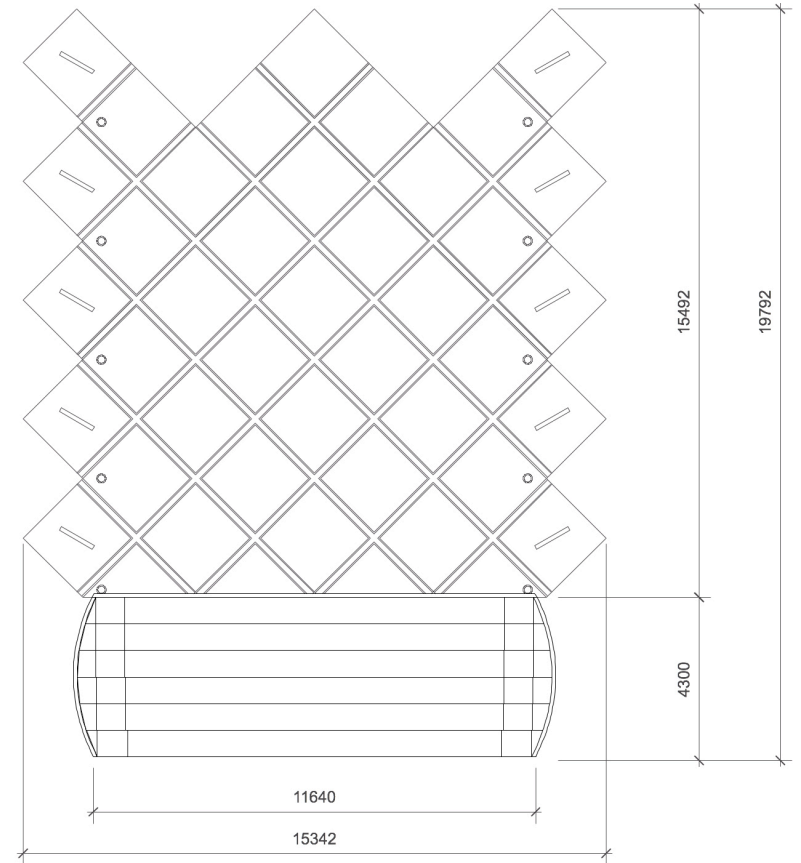
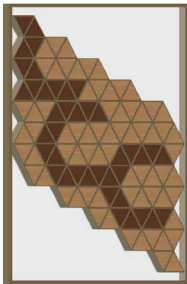
3D DESIGN

As the construction of the new building for the London College of Communication draws near, this design proposes a multifunctional space for both students and tutors while embodying the identity of the college. The key word for the design is flexibility; using a diamond pattern it allows flexibility of how the user would want to zone the space, to flexibility of purpose. It is mainly intended as an event space as well as a seating area when it is not in use. The glass panels on the side represent the identity of the college, based on its history and what it means now. When the panels are overlapped, a new image can be seen that incorporates all panels seamlessly using the colours of CMYK.





MOOD BOARD



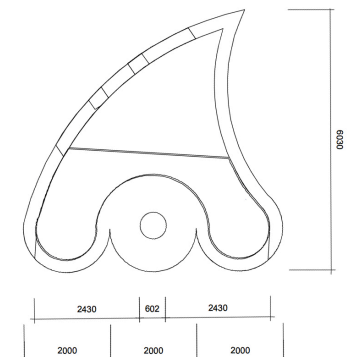
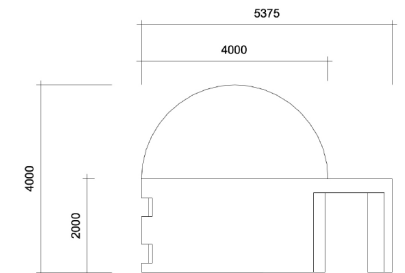
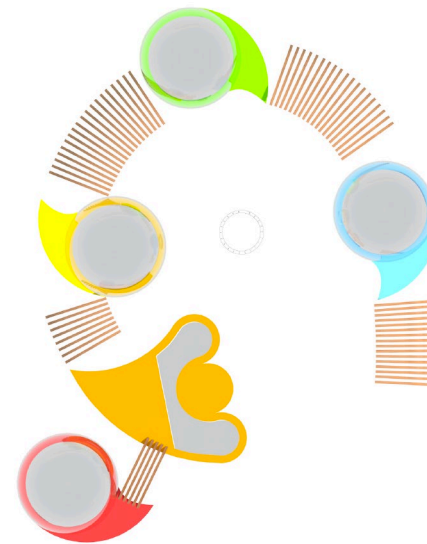
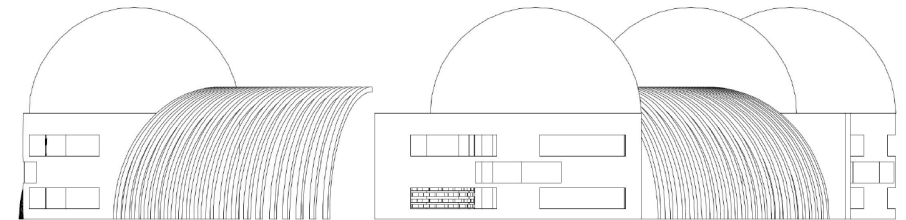
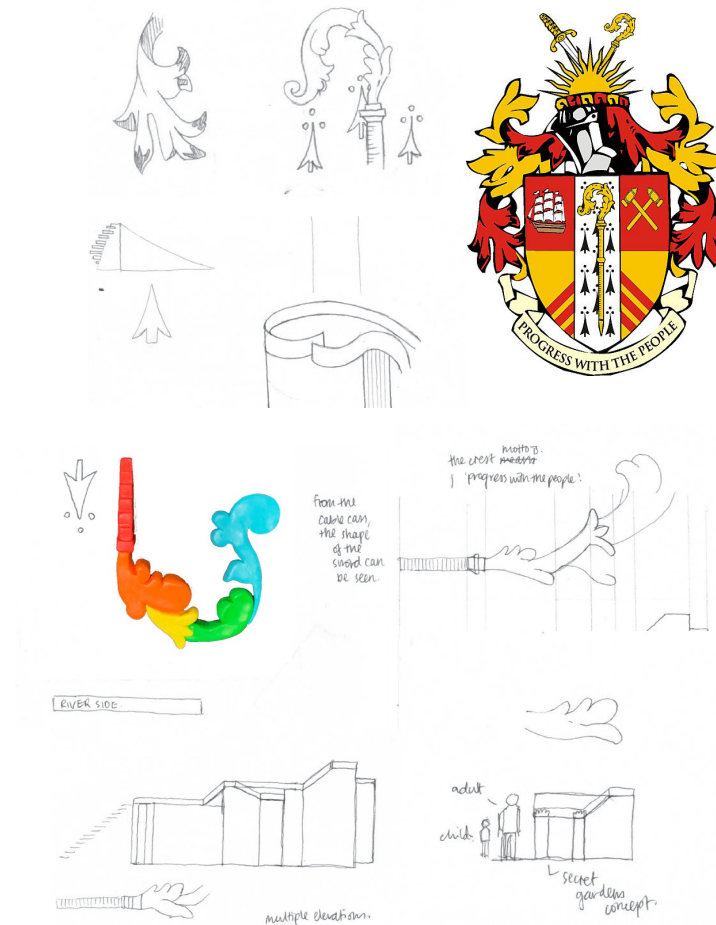




This space serves as a seasonal play and educational area for children and their parents alike through multicoloured pods, each containing a different activity. Installed during the winter, the parabolic shape of the structure acts as a barrier to the strong wind coming from the river, and the pods act as a shelter from the cold. The educational aspect of the pods is to allow residents to grow and harvest their own herbs and small

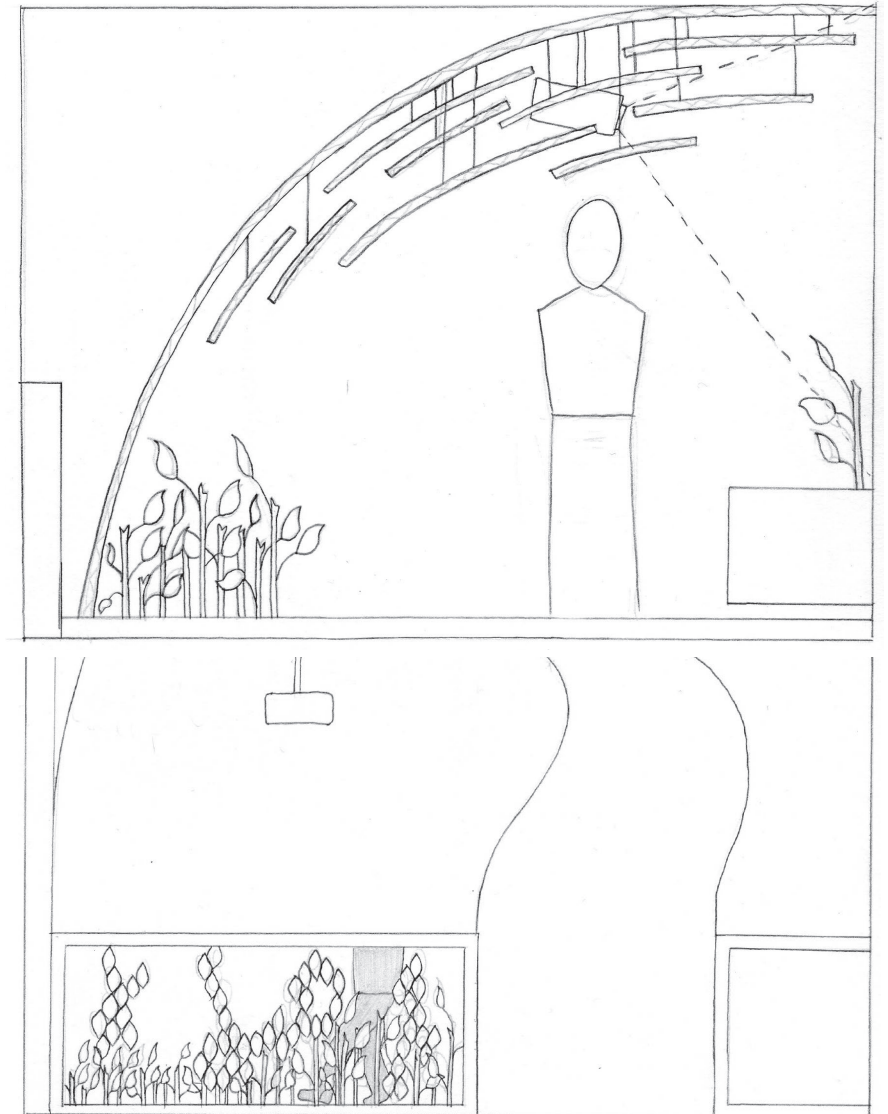
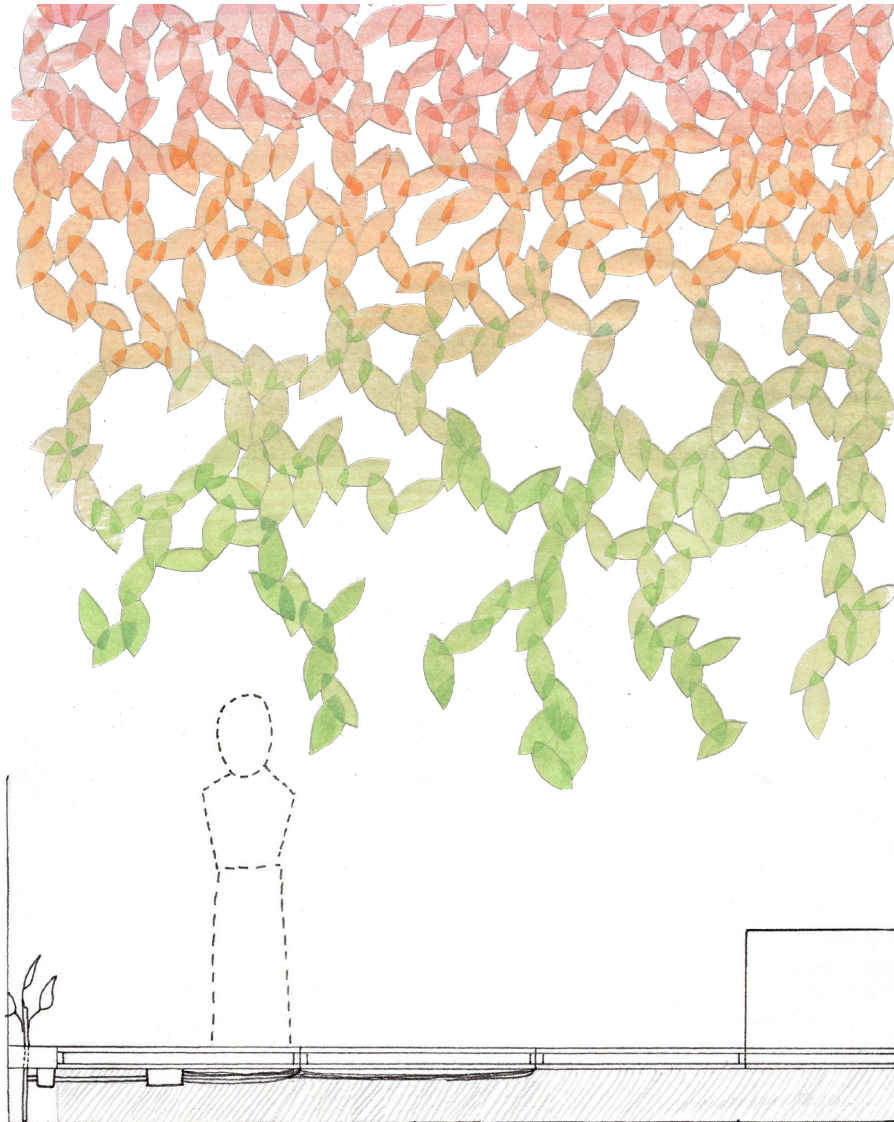
fruits and vegetables, in the hopes of bringing the community together, while providing the children with an opportunity to socialise with each other and learn how plants grow. The modular structures are designed for disassembly, allowing them to be taken down and stored during the summer where more people gather in the area, and put up again when is needed, minimising waste, and taking sustainability a step further for temporary structures.

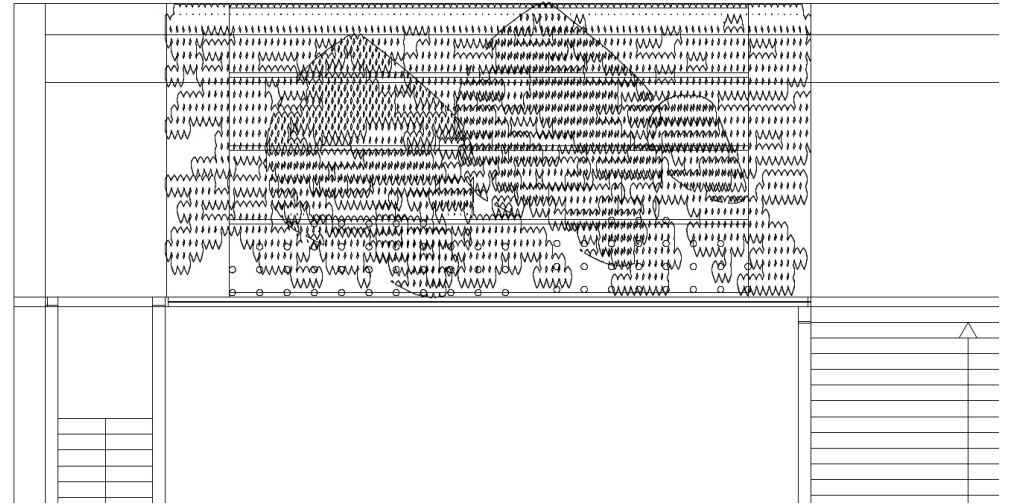
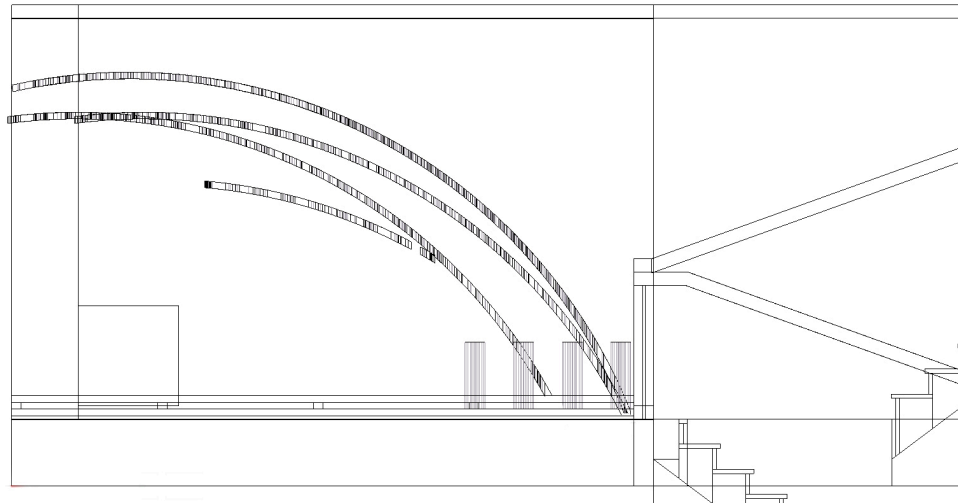
IDEA DEVELOPMENT



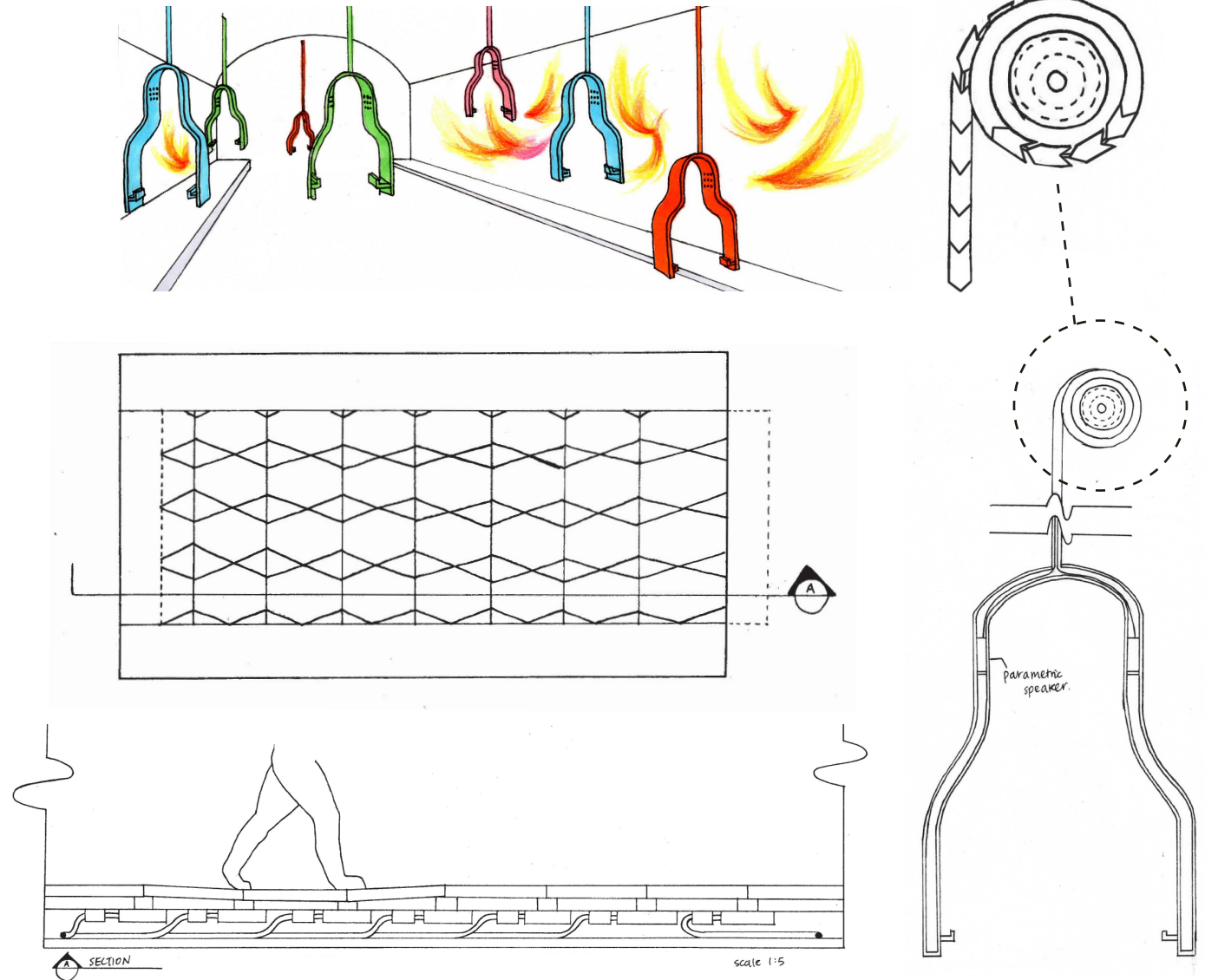


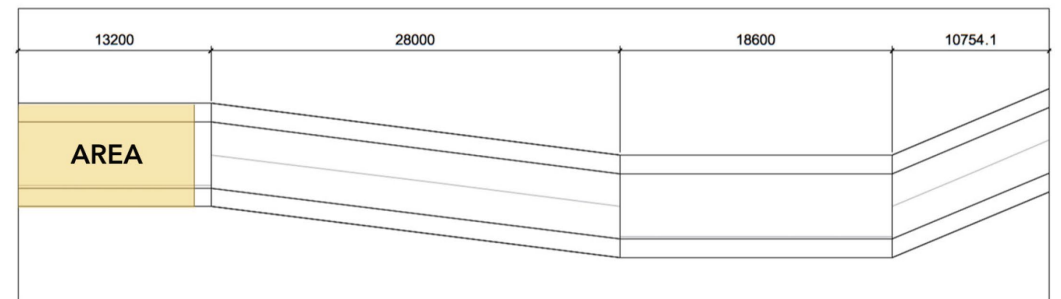
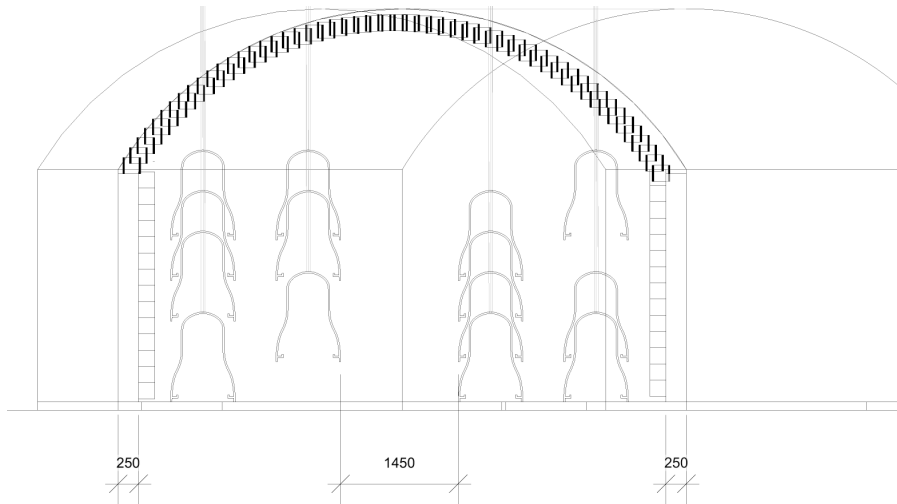
We were asked to design an installation at the London Design Museum for the Wilderness Foundation. Linking with the ethos of the foundation, my design made use of preserved and natural leaves to make a wall that would transform over time due to its natural course of life, as well as simple technology to create a space that responds to movement. This design aims to provide a unique experience for the visitors that transports them into the wilderness while raising awareness for the Wilderness Foundation.





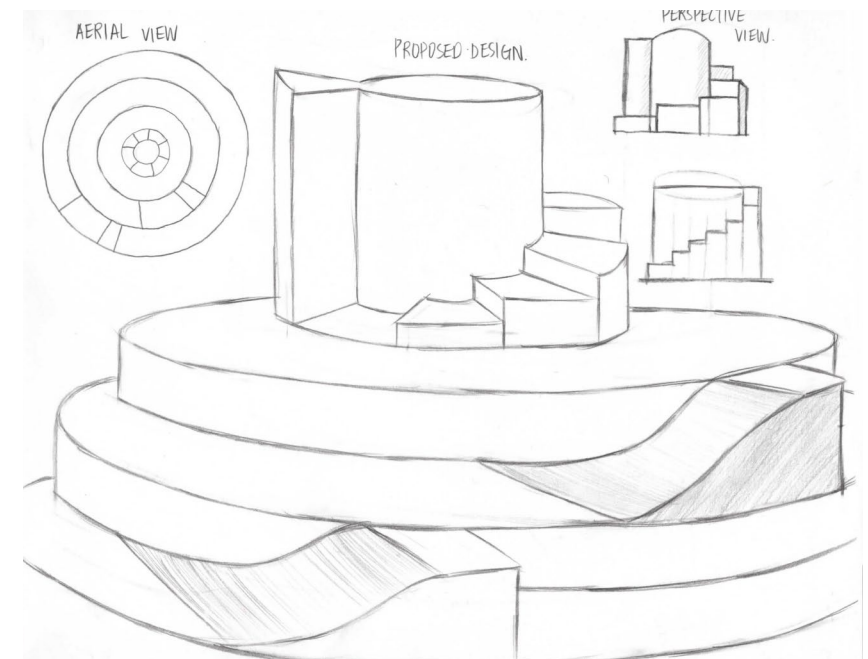
As HEMA sponsored the project, I had to familiarise myself with HEMA's ideals and mission statement, where I narrowed it down to one main word; inclusivity. I tried to incorporate that into my design of the tunnel by creating listening pods that would fit anyone due to the materials malleability. The digital aspect was also included to align with HEMA's future plans of strengthening their digital presence and appealing to a younger market. The colours in the design were chosen specifically to match HEMA's colourful stores to draw visual parallels and make it recognisable.

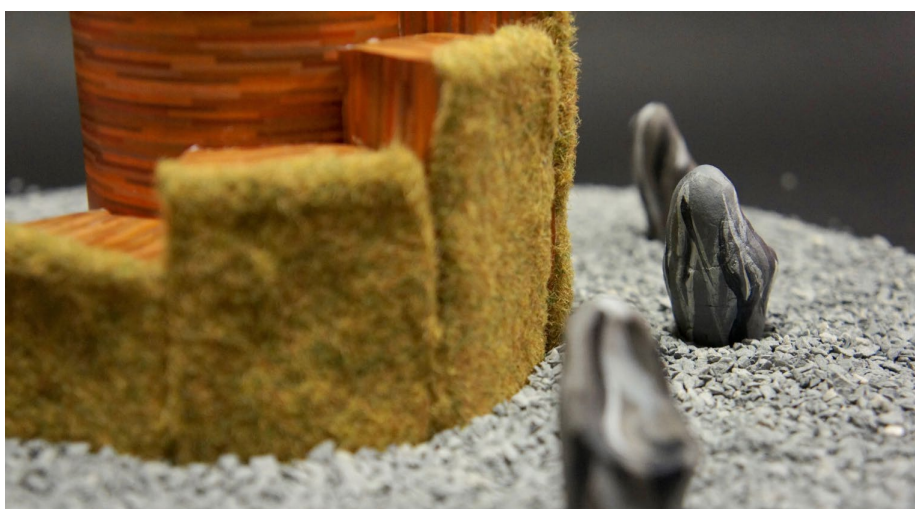




PROJECT: Parasite Project / **LOCATION: Arnold Circus, London E2 7JR**

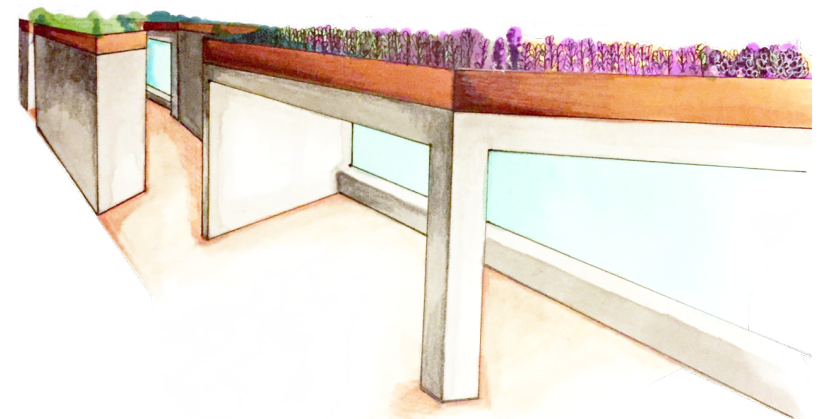
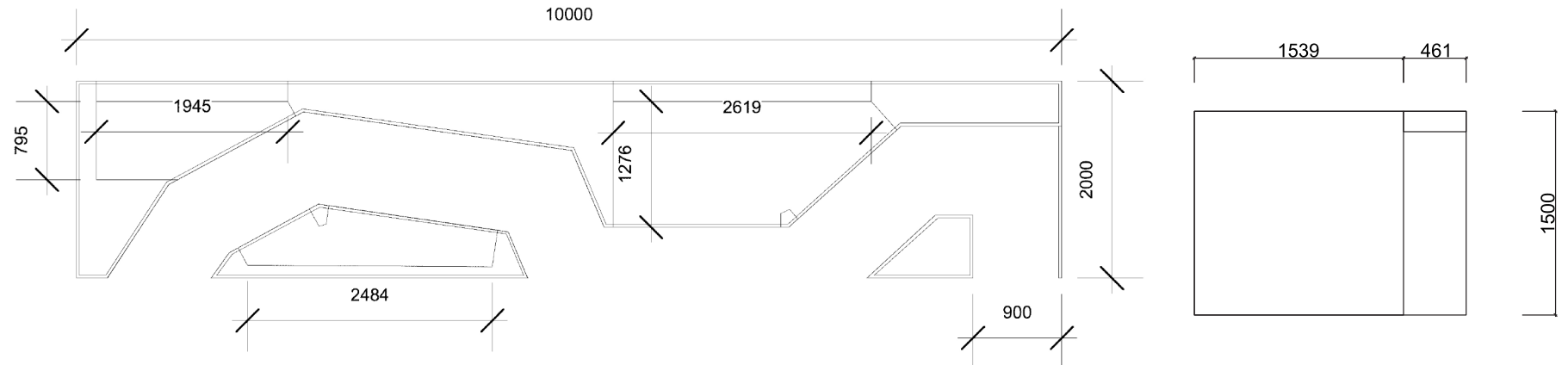
We were asked to design a 'parasite' that would fit into our assigned area and tackle a problem of our choosing. The area I was given was Arnold Circus and the problem I decided to tackle was a lack of socialising opportunities the existing pavilion provided. In order to bring more life into the area, I took inspiration from the Fibonacci Spiral and opened up the area to provide more entry and exit points. Material and colour was also a large consideration for this project, as I wanted the space to draw in passers-by.

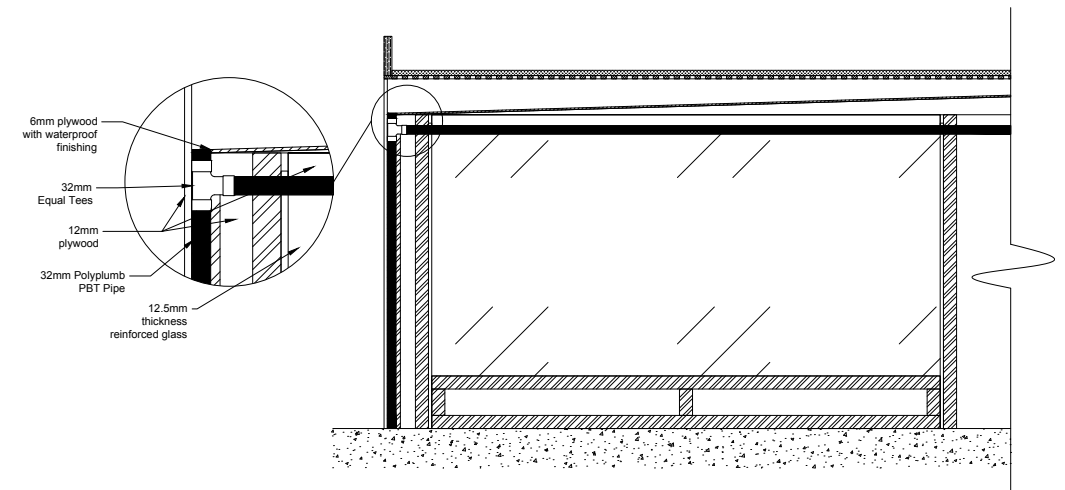
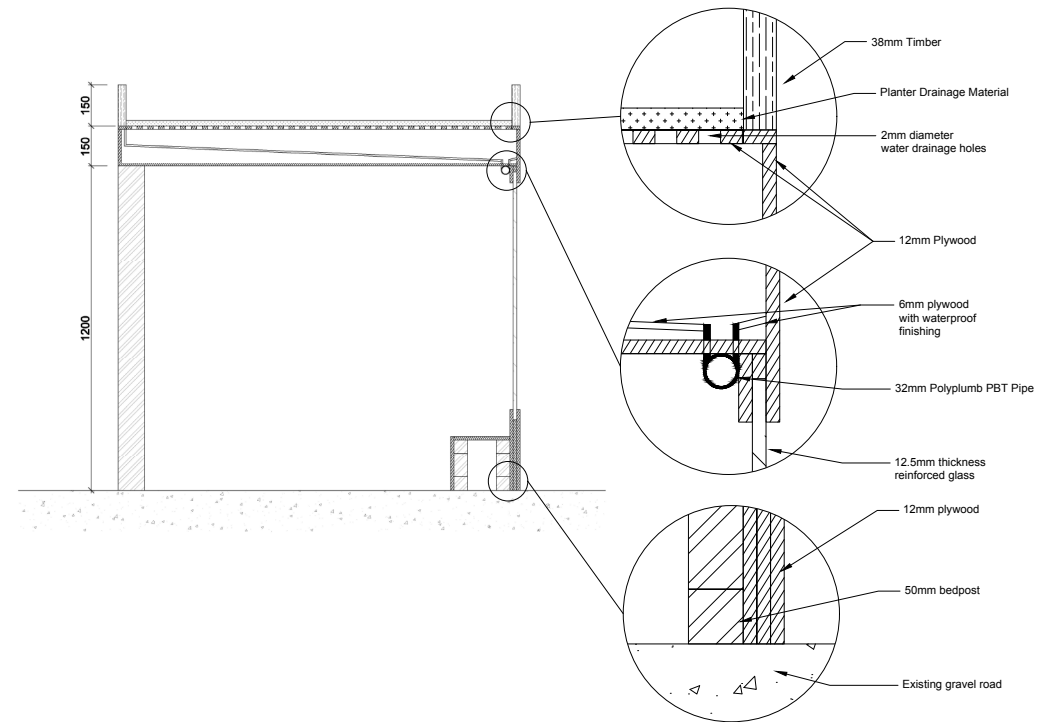




PROJECT: Kerbside Project / CLIENT: Southwark Council

Approached by Southwark Council, our brief was to repurpose an unused parklet areas in East Dulwich using information gathered through observation and talking to the people in the neighbourhood. As our site was right next to a primary school, this design aimed to provide a space for both the children and their parents to interact and have different enjoyable experiences from their respective perspectives. The garden above is set at an adult eye-level height and the interactive play area at the bottom at the height of a toddler. The plants were also specifically chosen to include an educational aspect to the space.









As one of the 2 coordinators for the successful BA (Hons) Spatial Design Degree Show that took place in London College of Communication, I was involved from the initial sketches to the final construction which included designing, planning, sourcing and project management. Social skills in a professional setting were paramount to making it a success. The different coloured vinyls represented the different pathways and acted as directional guides for guests looking from the outside to the inside.

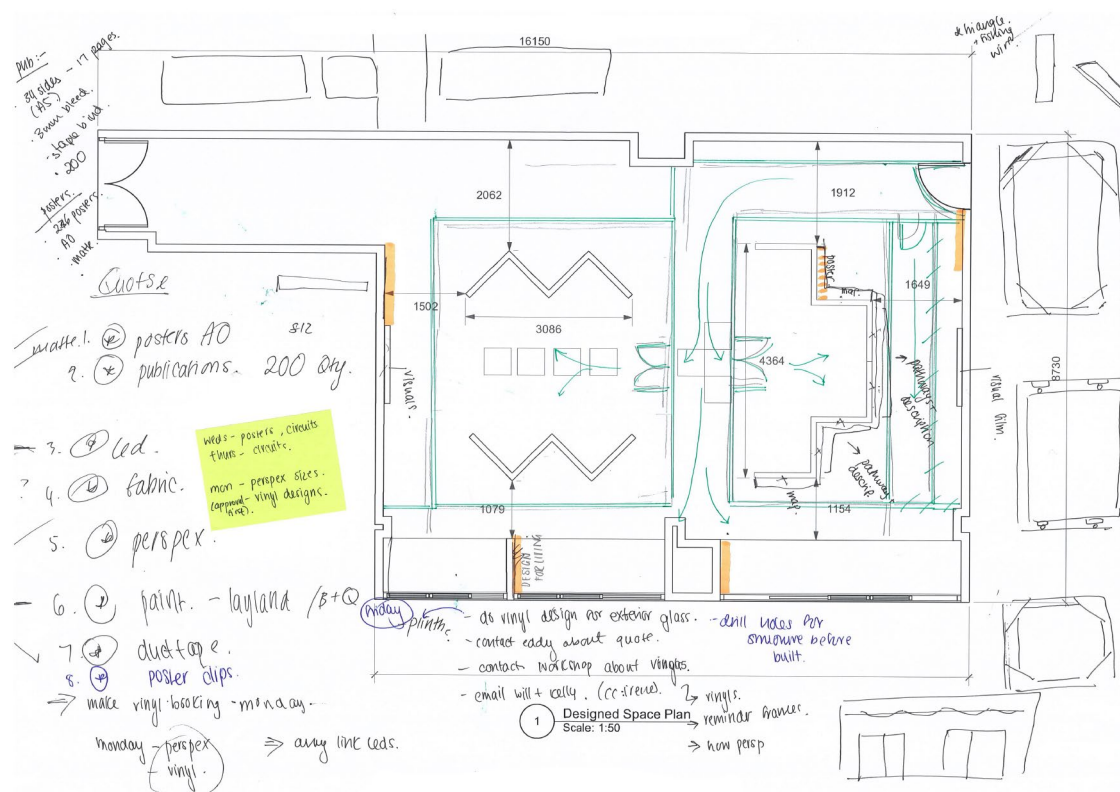
BA SPATIAL DESIGN DEGREE SHOW

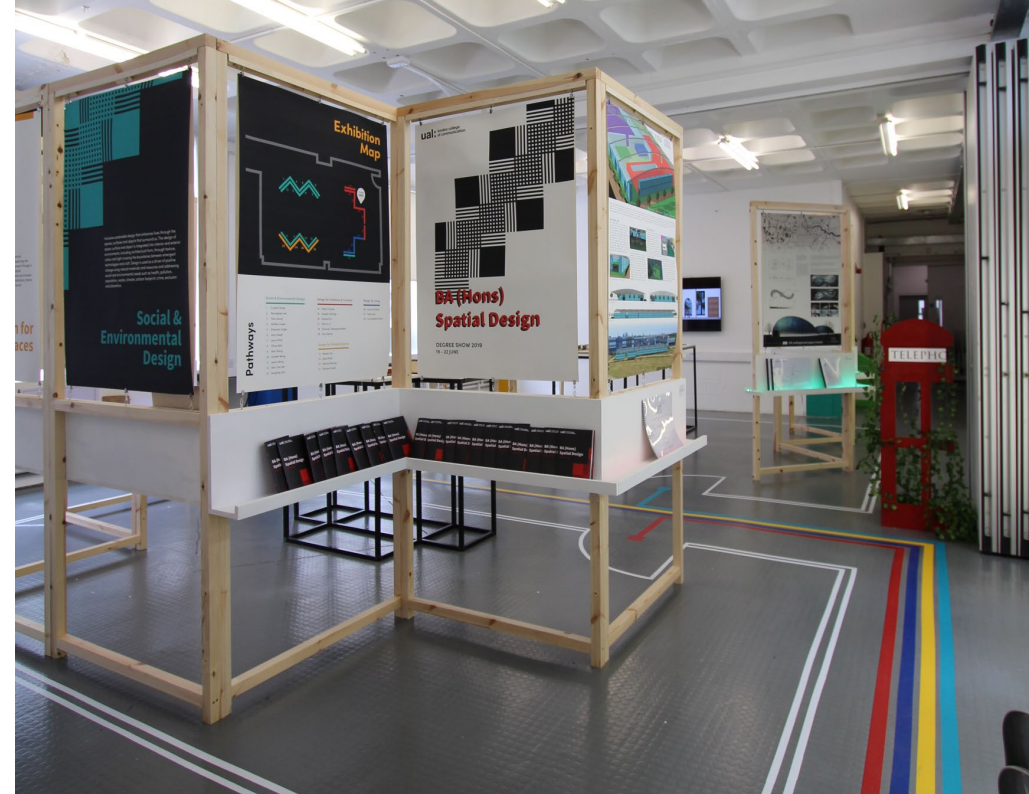
DESIGN FOR
SOCIAL &
ENVIRONMENTAL

DESIGN FOR
BRANDED SPACES

DESIGN FOR
EXHIBITION
& CURATION

DESIGN FOR
LIVING





Specially chosen to participate in an interdisciplinary team to redesign one of the staff rooms in the college. We worked closely with the Dean of Design as the client, and was responsible for making technical drawings, sourcing, and presenting our collective proposal. Some of the key considerations as included in the brief was to introduce greenery and wellbeing while keeping sustainability in mind. We brainstormed ideas as a group and did further research into the pain points and opinions of the existing space from people who were using it to produce a final proposal that created a balance between the existing salvaged furniture, and the introduction of plants and an interactive TV element.

